

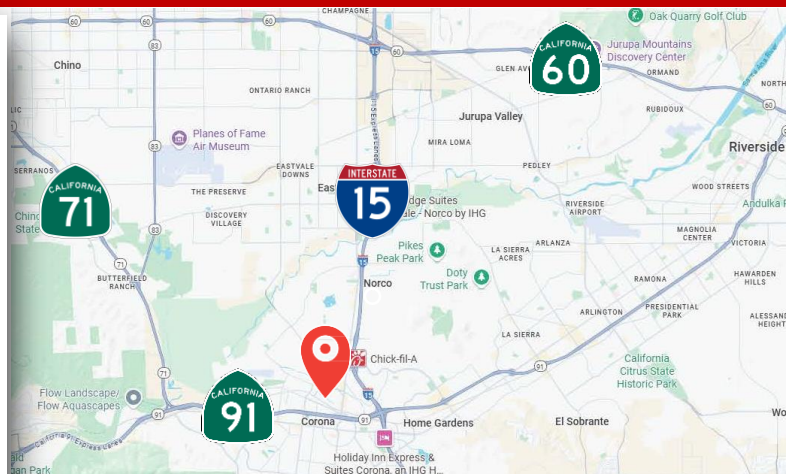
Rincon Business Center **FOR SUBLEASE**



548 Malloy Ct., Corona, CA 92880

PROPERTY FEATURES

- ± 7,135 SF Industrial Building
- ± 750 SF Each First & Second Floor Office Space
- Large, Secured, Gated All-Concrete Yard
- Zoning: M-1
- One (1) 12'x14' GL Door & One (1) 14'x14' GL Door
- 24' Ceiling Height
- Sixteen (16) Parking Stalls
- 800 Amps; 277/480V (verify)
- One (1) Office & One (1) Warehouse Restroom
- Sprinklered – 0.40 GPM/2,000 SF
- Year Built – 2002
- Separate Temperature Control Enclosure
- Lease Expiration: July 31, 2028 (Longer Term Possible)



**Ashwill
Associates**
COMMERCIAL REAL ESTATE

Kyle Williams
949.293.6788
CAL DRE Lic# 02015940
kyle@ashwillassociates.com
Corp CAL DRE# 01291393

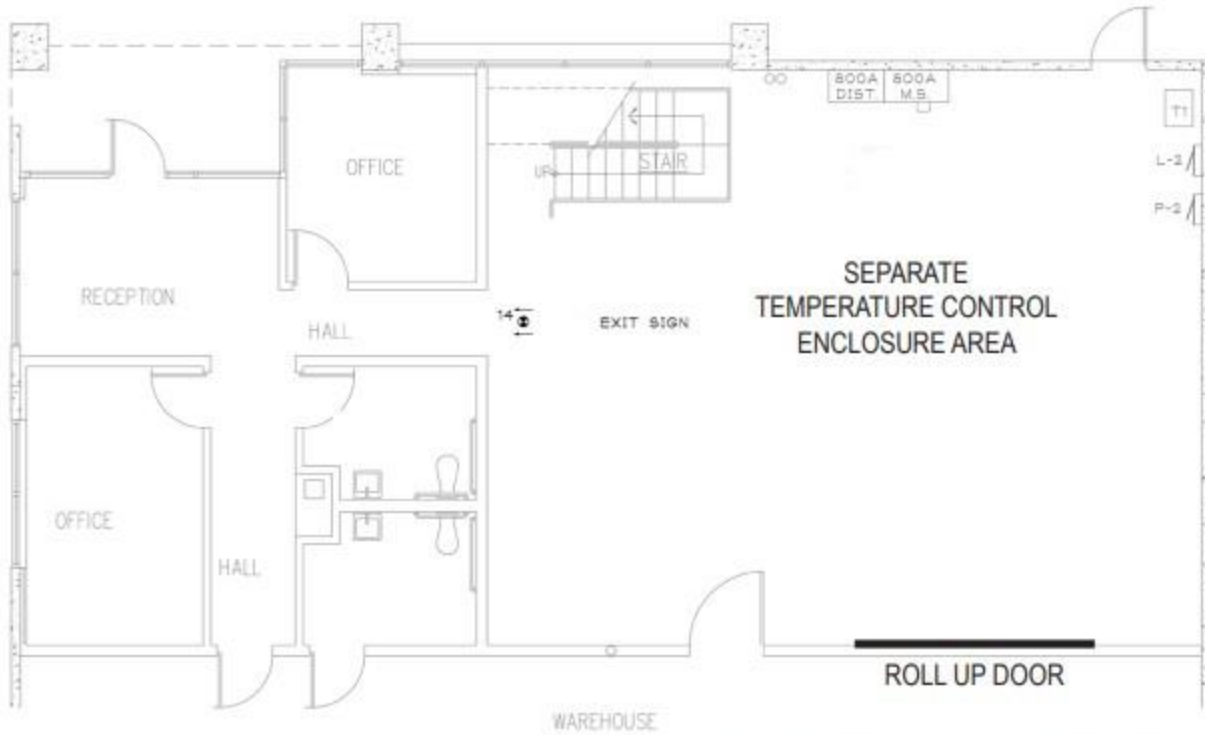


McKensie Lowstetter
949.423.9188
CAL DRE Lic# 02074918
McKensie@simpleteamca.com

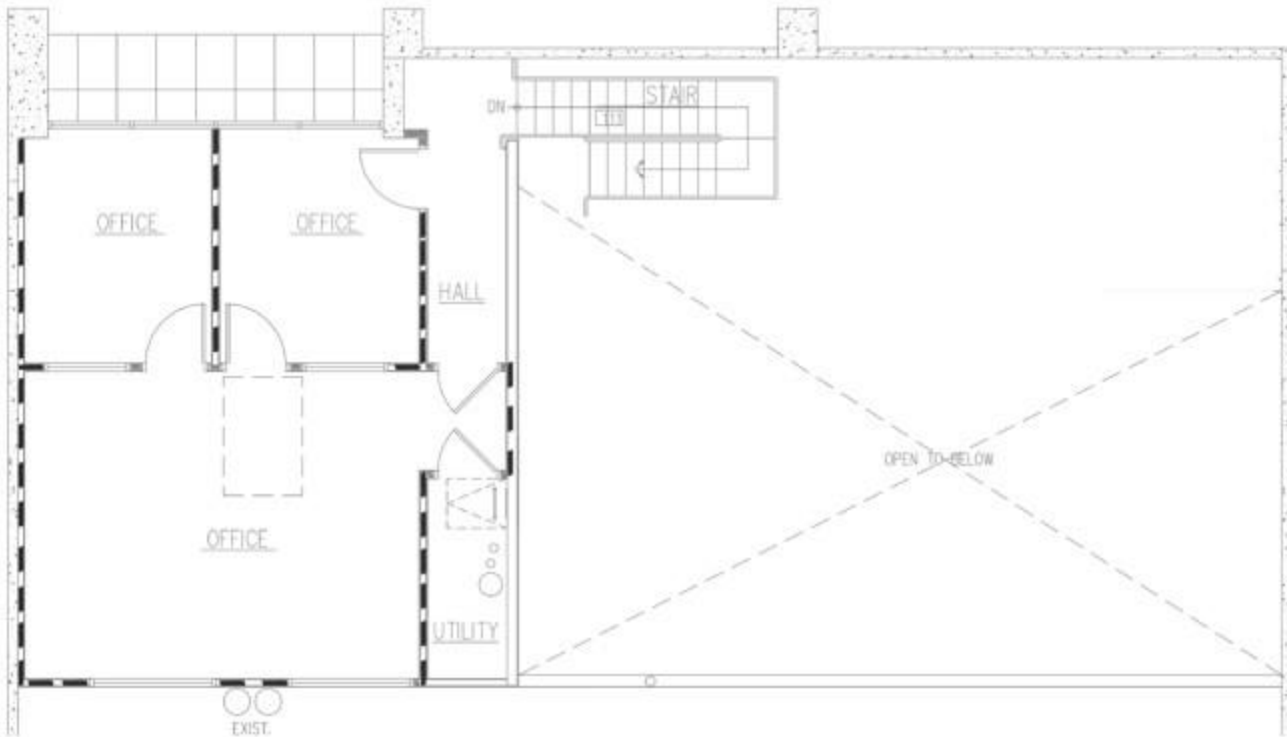
FLOOR PLAN

548 MALLOY CT. | CORONA, CA 92880

FIRST FLOOR OFFICE



SECOND FLOOR OFFICE

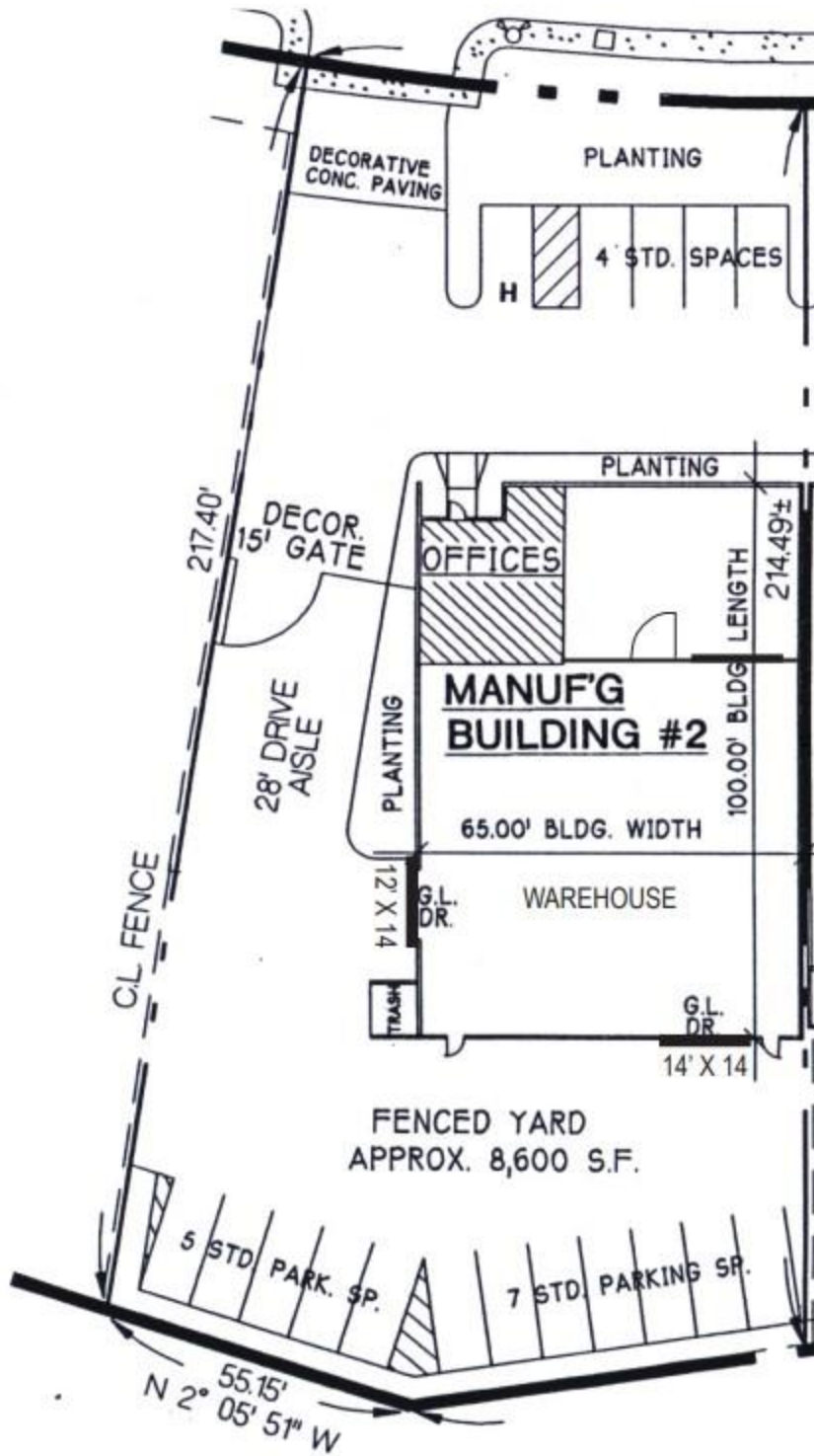


Kyle Williams | 949.293.6788
CAL DRE Lic# 02015940
kyle@ashwillassociates.com

McKensie Lowstetter | 949.423.9188
CAL DRE Lic# 02074918
McKensie@simpleteamca.com

SITE PLAN

548 MALLOY CT. | CORONA, CA 92880



Property Photos

548 MALLOY CT. | CORONA, CA 92880

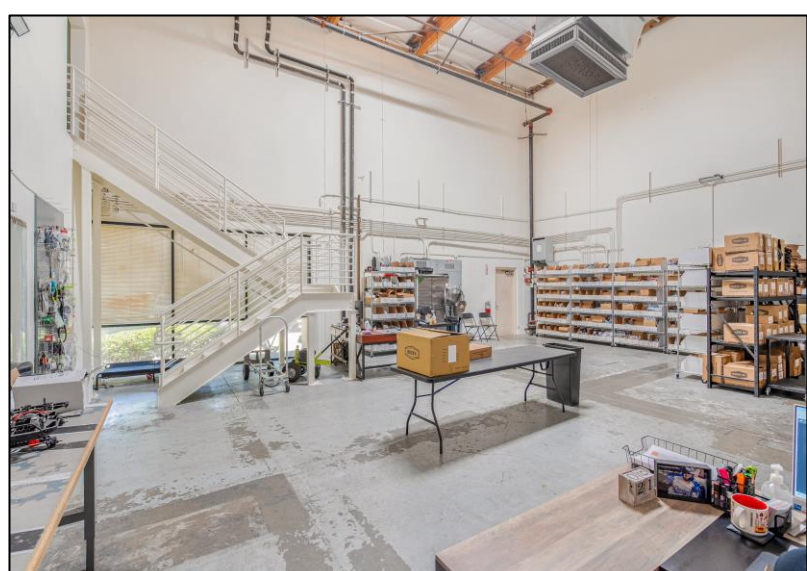
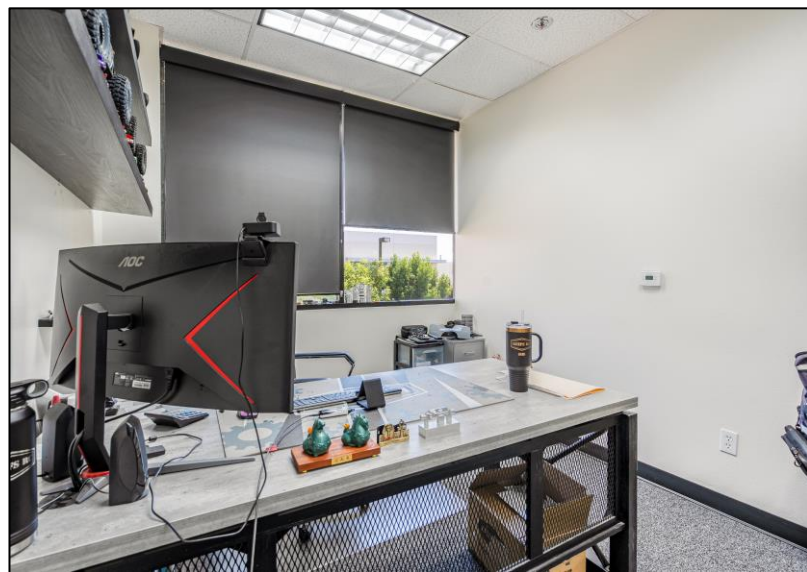


Kyle Williams | 949.293.6788
CAL DRE Lic# 02015940
kyle@ashwillassociates.com

McKensie Lowstetter | 949.423.9188
CAL DRE Lic# 02074918
McKensie@simpleteamca.com

Property Photos

548 MALLOY CT. | CORONA, CA 92880



Kyle Williams | 949.293.6788
CAL DRE Lic# 02015940
kyle@ashwillassociates.com

McKensie Lowstetter | 949.423.9188
CAL DRE Lic# 02074918
McKensie@simpleteamca.com

Property Photos

548 MALLOY CT. | CORONA, CA 92880



Kyle Williams | 949.293.6788
CAL DRE Lic# 02015940
kyle@ashwillassociates.com

McKensie Lowstetter | 949.423.9188
CAL DRE Lic# 02074918
McKensie@simpleteamca.com